

Conceptualizing integration: Descendants of immigrants trajectories *as a measure*

Ana Raquel Matias

CIES/ISCTE

11th International Metropolis Conference (2-6 October, 2006)

**Workshop: Socio-Anthropological Perspectives on the Challenges Facing the Integration of
Migrant Communities within EU Space: reality and options**



-
- On the basis of this presentation there are two research projects:

1) *Young Descendants of African Immigrants: Transition to Social Integration or to Social Exclusion?* (2003-2005), coordinated by Prof. Fernando Luís Machado (CIES/ISCTE)

2) *Toward a Social Construction of an European Youth-Ness: Experience of Inclusion and Exclusion in the Public Sphere among Second Generation Migrated Teenagers (TRESEGY)* (2006-2009), coordinated by Prof. Beatriz Padilla (CIES/ISCTE)

11th International Metropolis Conference (2-6 October, 2006)

Workshop: Socio-Anthropological Perspectives on the Challenges Facing the Integration of Migrant Communities within EU Space: reality and options



Table 1

Immigrant population in Portugal - 2005

Nationalities	n	%
Total	463.822	100,00%
Europa	185.062	39,90%
European Union	76.164	16,42%
Germany	13.133	2,83%
Spain	15.883	3,42%
France	9.280	2,00%
Italy	4.591	0,99%
Netherlands	5.383	1,16%
United Kingdom	18.041	3,89%
Others from Europe	108.898	23,48%
Moldova	13.718	2,96%
Romania	12.181	2,63%
Russia	8.209	1,77%
Ukraine	66.288	14,29%
Africa	153.534	33,10%
Angola	35.395	7,63%
Cape Verde	64.469	13,90%
Guiné-Bissau	25.270	5,45%
Mozambique	5.474	1,18%
São Tomé e Príncipe	10.554	2,28%
Others from Africa	12.372	2,67%
America	84.111	18,13%
North America	10.219	2,20%
EUA	8.047	1,73%
Central and South America	73.892	15,93%
Brazil	80.933	17,45%
Asia	26.138	5,64%
China	9.206	1,98%
India	5.097	1,10%
Paquistan	4.208	0,91%

Source: S.E.F., DPF - Núcleo de Planeamento, 2005

11th International Metropolis Conference (2-6 October, 2006)

Workshop: Socio-Anthropological Perspectives on the Challenges Facing the Integration of Migrant Communities within EU Space: reality and options



DIFFERENT SOCIOLOGICAL CATEGORIES

- ❖ Second generation immigrants?
- ❖ Youths of immigrant descendants and Young immigrants?
- ❖ Centre the analyse in their immigrant origin or in their youth as a social category?

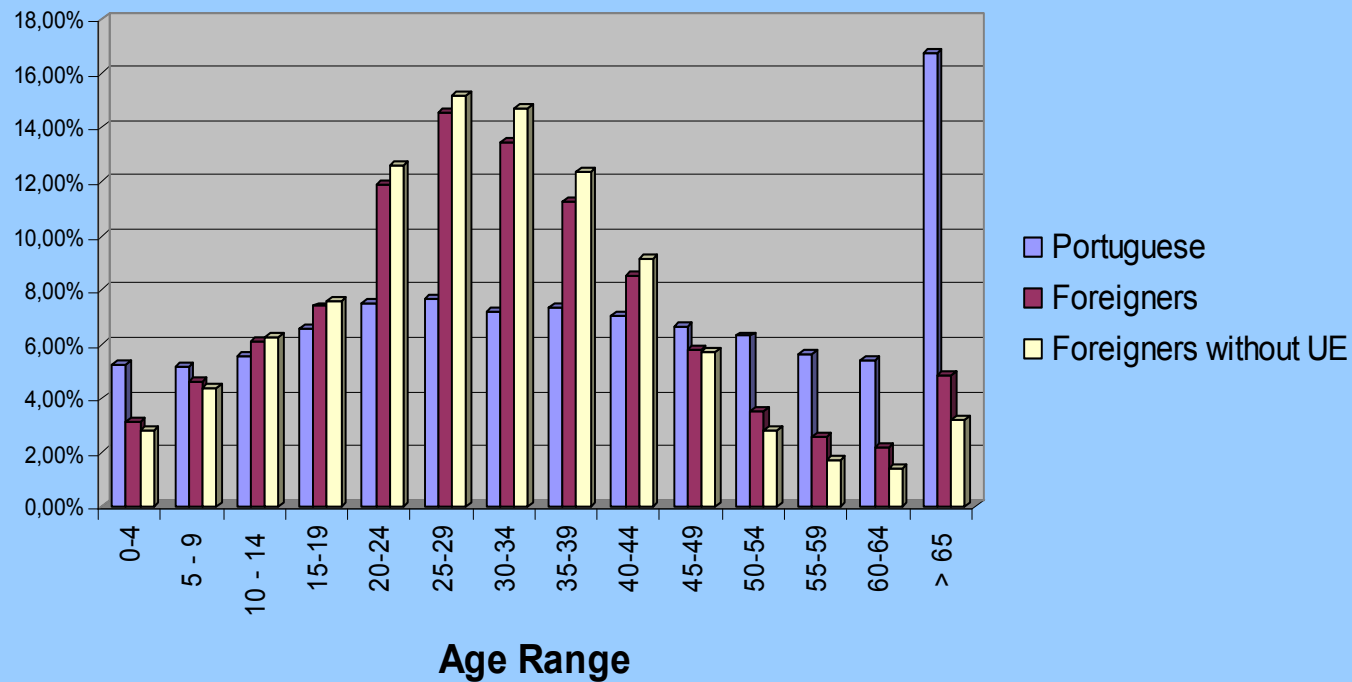
11th International Metropolis Conference (2-6 October, 2006)

Workshop: *Socio-Anthropological Perspectives on the Challenges Facing the Integration of Migrant Communities within EU Space: reality and options*



FIGURE 1

Population living in Portugal, by nationality and age range



Source: INE, CENSOS 2001

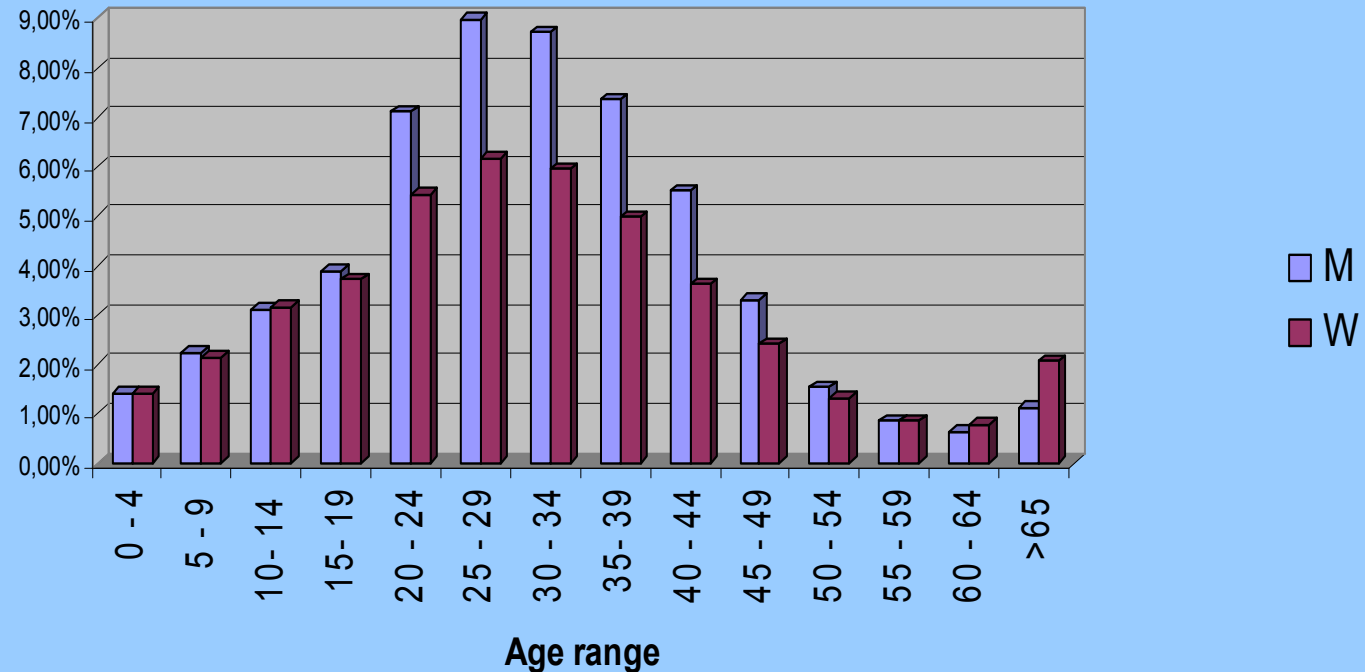
11th International Metropolis Conference (2-6 October, 2006)

Workshop: *Socio-Anthropological Perspectives on the Challenges Facing the Integration of Migrant Communities within EU Space: reality and options*



FIGURE 2

Foreigner population (without UE) living in Portugal, by age range and sex



Source: INE, Censos 2001

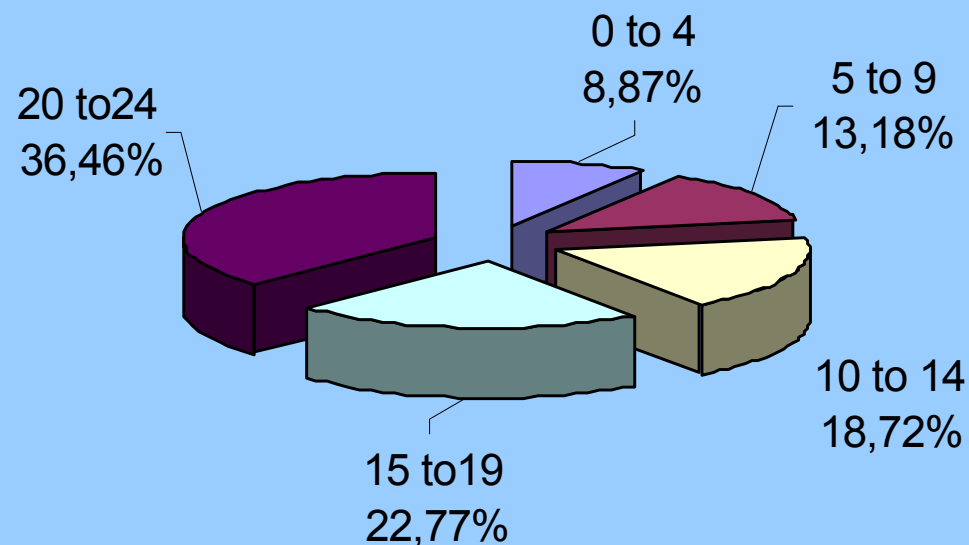
11th International Metropolis Conference (2-6 October, 2006)

Workshop: *Socio-Anthropological Perspectives on the Challenges Facing the Integration of Migrant Communities within EU Space: reality and options*



FIGURE 3

Foreigner population from 0 to 24, by age range
Source: INE, Censos 2001



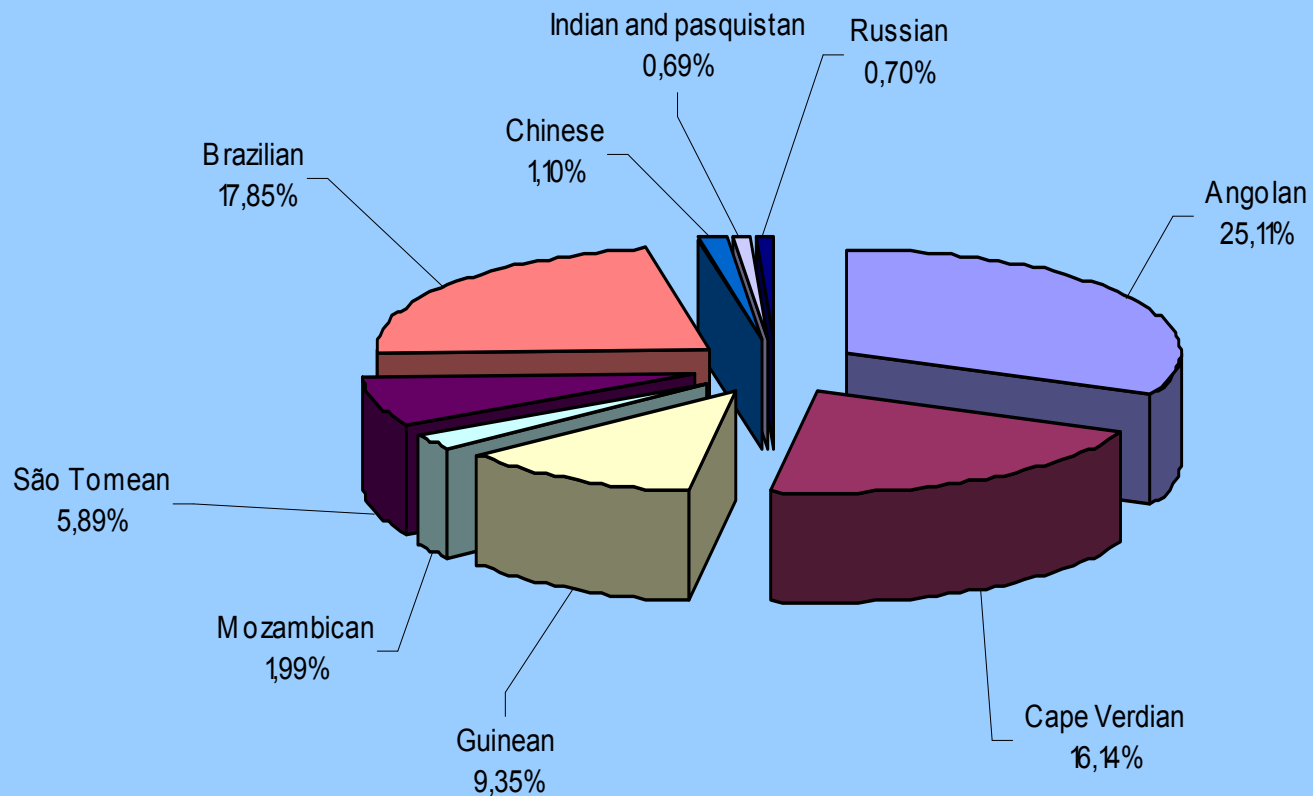
11th International Metropolis Conference (2-6 October, 2006)

Workshop: Socio-Anthropological Perspectives on the Challenges Facing the Integration of Migrant Communities within EU Space: reality and options



FIGURE 4

Foreigner population from 0 to 24 years old, by nationality
Source: INE, Censos 2001



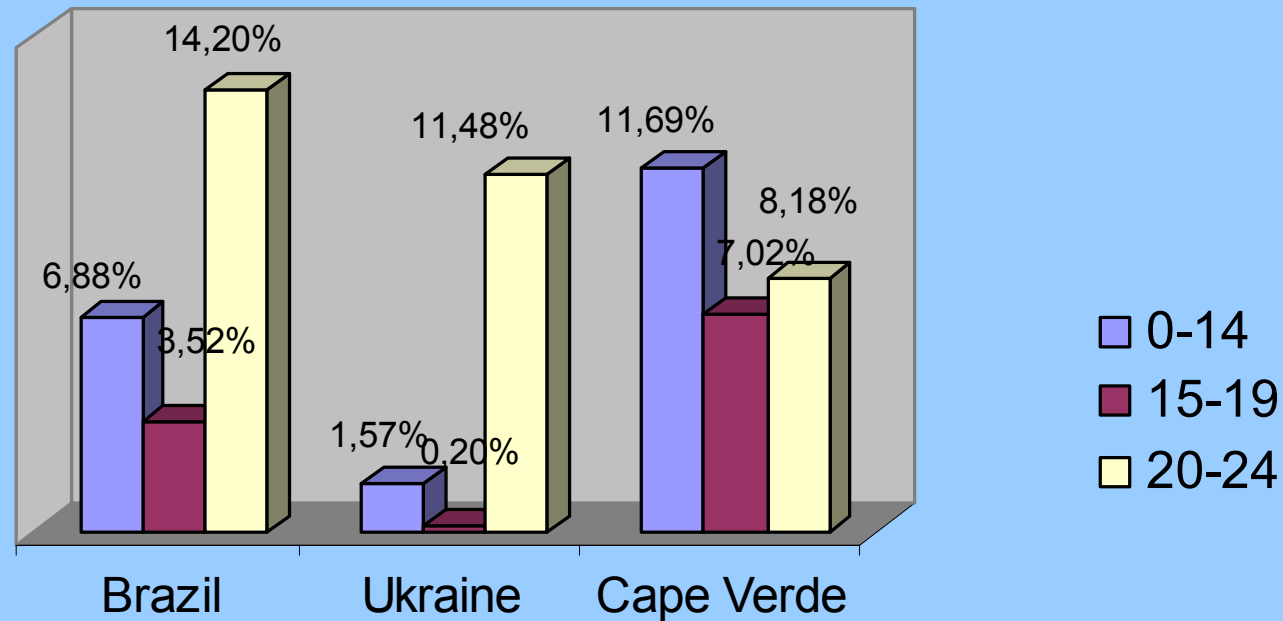
11th International Metropolis Conference (2-6 October, 2006)

Workshop: Socio-Anthropological Perspectives on the Challenges Facing the Integration of Migrant Communities within EU Space: reality and options



FIGURE 5

Foreigners in Portugal, 0 to 24 years old



Three main nationalities

Source: SEF, 2005

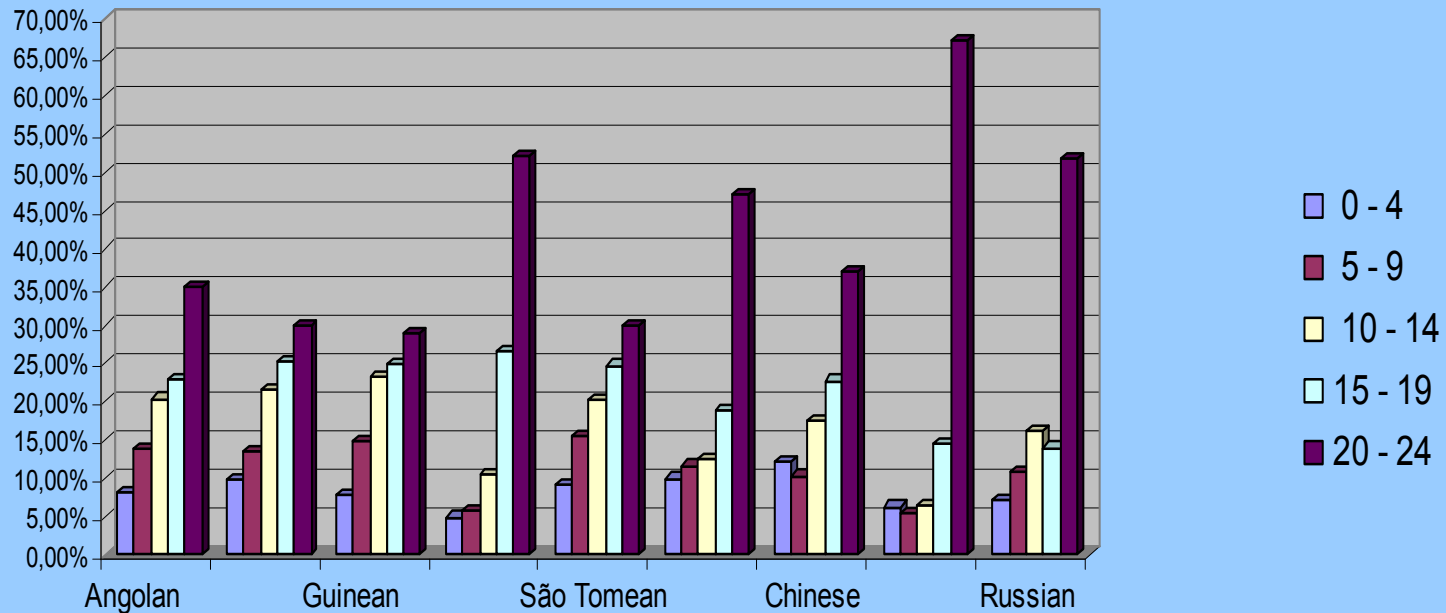
11th International Metropolis Conference (2-6 October, 2006)

Workshop: *Socio-Anthropological Perspectives on the Challenges Facing the Integration of Migrant Communities within EU Space: reality and options*



FIGURE 6

Foreigner population from 0 to 24 years old, by nationality and age range



By nationality

Source: INE, Censos 2001

11th International Metropolis Conference (2-6 October, 2006)

Workshop: *Socio-Anthropological Perspectives on the Challenges Facing the Integration of Migrant Communities within EU Space: reality and options*



Trends and questions

- Which are the social and cultural factors that interfere in their social integration or social exclusion, in transition for adulthood;
- Do they share identical trajectories with young autochthonous in the same social condition?
- Or, are children of immigrants a potentially social excluded category, in the base of ethnic-racial criteria?
- In which way access to nationality interferes to their process of integration, thus, to a full idea of a citizenship belonging?

11th International Metropolis Conference (2-6 October, 2006)

Workshop: *Socio-Anthropological Perspectives on the Challenges Facing the Integration of Migrant Communities within EU Space: reality and options*



THANK YOU VERY MUCH !

ana.matias@iscte.pt

11th International Metropolis Conference (2-6 October, 2006)

Workshop: *Socio-Anthropological Perspectives on the Challenges Facing the Integration of Migrant Communities within EU Space: reality and options*

