

Connecting Policy and Research

Connecting Policy and Research

Why governments need policy-research

An experiment: Metropolis

Some lessons and ideas

Why Governments Need Independent Academically- based Policy Research

To produce better evidence-based policy

To build research receptor capacity

To work horizontally

To mobilize stakeholders



The Original Problem

- inadequate federal capacity to address broad strategic issues
- disinvestment in capacity
- lack of of external expertise
- numerous stakeholders but no coherent policy-research program

The Challenge

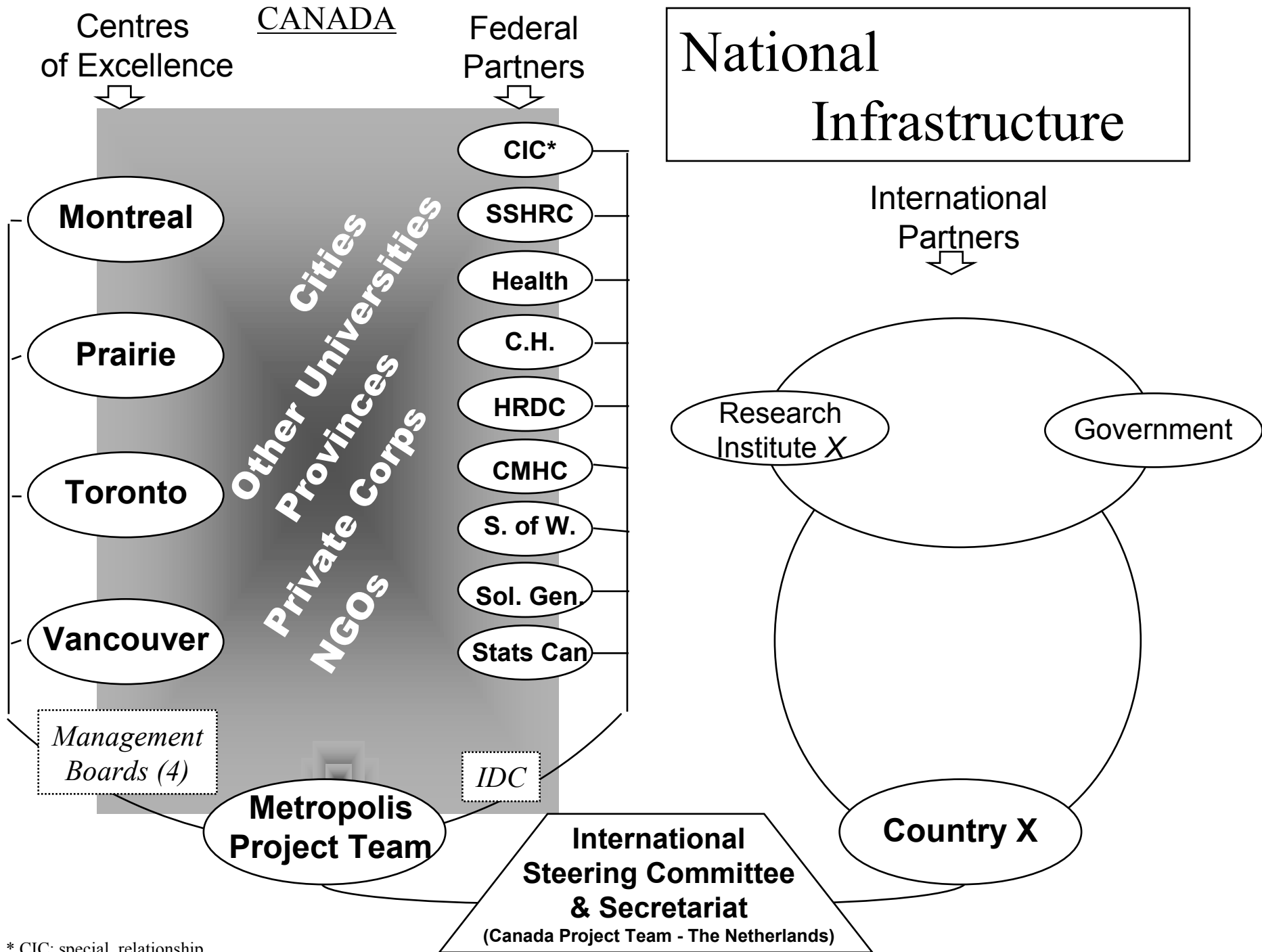
- to increase external research capacity
- to create a focus on policy issues
- to stimulate research use by stakeholders

The Approach

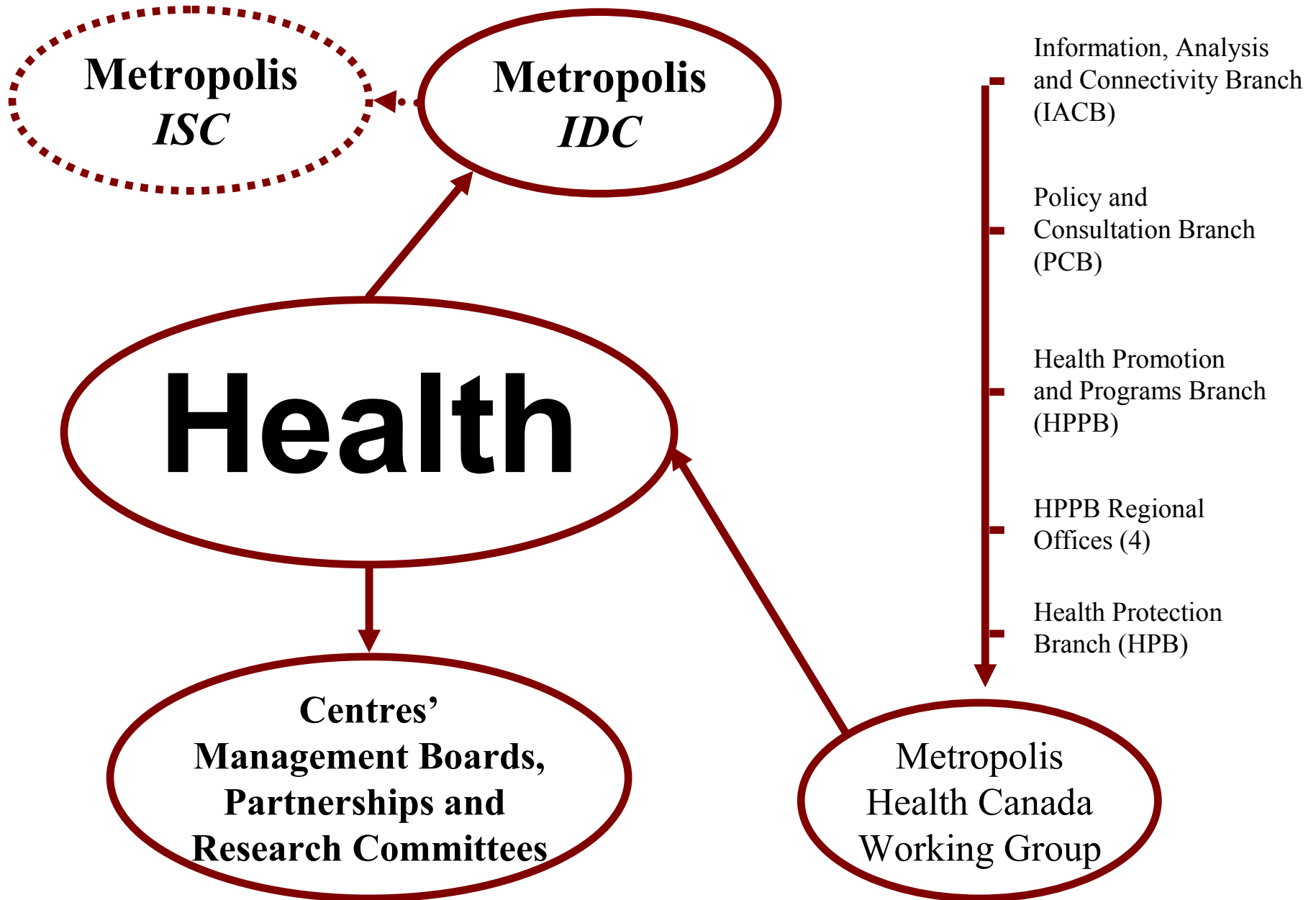
To develop multi-stakeholder partnerships

To develop policy-analysis institutes

To bring them together

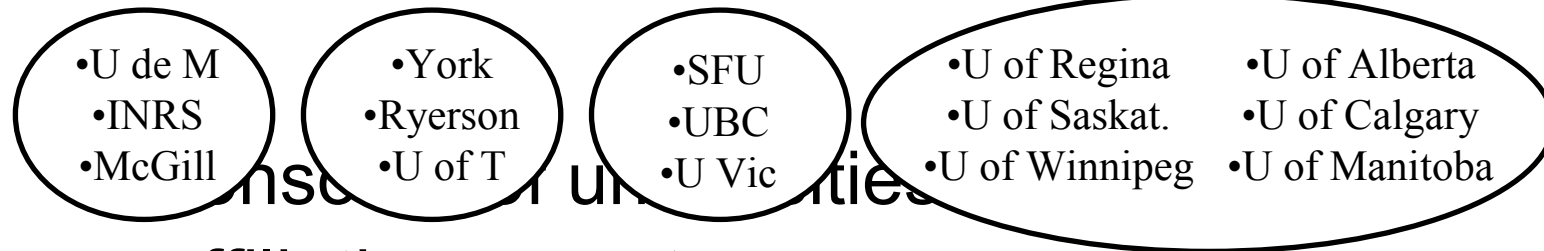


* CIC: special relationship



Creating Network of Policy Analysis Institutes

- Centres of Excellence
 - five Centres



- affiliating experts
- 200 academics, double this number of graduate students
 - Leveraged Resources

Bringing it together

Structural bonds:

- Interdepartmental Committee and local committees
- Centre management and advisory boards
- Centre domains
- International Steering Committee, Secretariat, other
- Project Team

Activity bonds:

- National and international annual conferences
 - Workshops, seminars, 'conversations', brown bag lunches, etc.
- ...attended by ministers, officials, researchers, policy community, NGO's, service providers, private sector

Communications

- Metropolis website – Centre websites
- Newsletters
- Centre newsletters
- **JIMI** (Metropolis Journal of International Migration and Integration)
- Special issues of journals (eg. Journal of Ethnic Studies)
- Journal articles
- Conference Proceedings and Reports
- Videos and radio documentaries
- Metropolis Institute

Outcomes

... and lessons

- Enormous enterprise
- International prominence
- Huge volume of research
- Large numbers of graduate students
- Spin-offs: graduate study programs, training for officials and for NGOs, data repositories
- Numerous links among researchers, policy officials and NGOs (national and international)
- Acclaim for policy excellence

Outcomes

. . . . and lessons

- Different eco-systems
- University incentive structures
- Weak receptor capacity
- Modes and language of communication
- Silos everywhere
- Geography
- Timeliness

Outcomes ...

... and lessons

- Academic engagement is essential for effective policy-research
- Demand led solutions are essential for solving policy-research problems
- Governments and universities must invest in bridging infrastructure and leadership