

The Criminality of Foreigners in Portugal

11th Metropolis International Conference 2006/10/04

Hugo de Seabra & Tiago Santos

The project

númena

CENTRO
DE INVESTIGAÇÃO
EM CIÊNCIAS SOCIAIS
E HUMANAS

This project resulted from a challenge posed to the research team by the coordinator of the immigration observatory, Eng.º Roberto Carneiro.

It was developed with a grant attributed by the High Commission for Immigration and Ethnic Minorities.

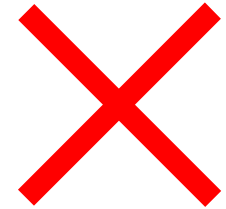


Research question

númena

CENTRO
DE INVESTIGAÇÃO
EM CIÊNCIAS SOCIAIS
E HUMANAS

Is the proved participation of aliens in criminal acts higher than what their proportion in the Portuguese society would lead us to expect?



If aliens and Portuguese were to have similar situations within the social structure, would there be differences in what relates to proved criminal involvement?

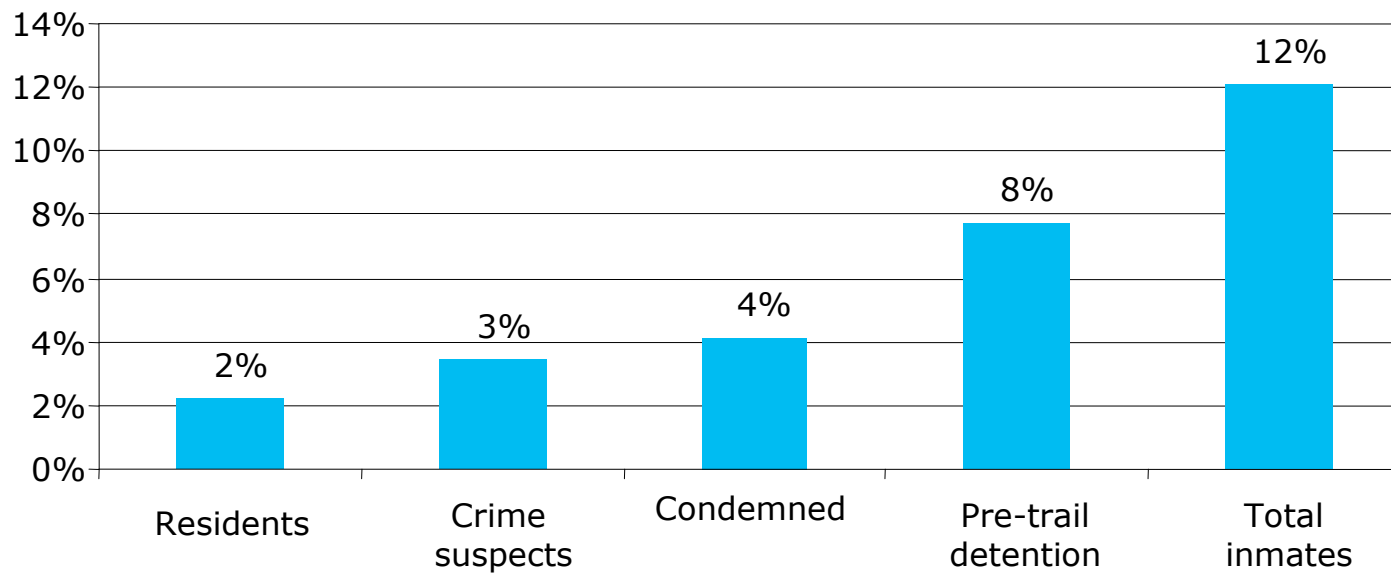


Proportion of aliens (2001)

númena



CENTRO
DE INVESTIGAÇÃO
EM CIÊNCIAS SOCIAIS
E HUMANAS



Aliens in Portuguese society



CENTRO
DE INVESTIGAÇÃO
EM CIÊNCIAS SOCIAIS
E HUMANAS

According to the 2001 Census, the aliens residing in Portugal showed, *vis-à-vis* the Portuguese, the following characteristics:

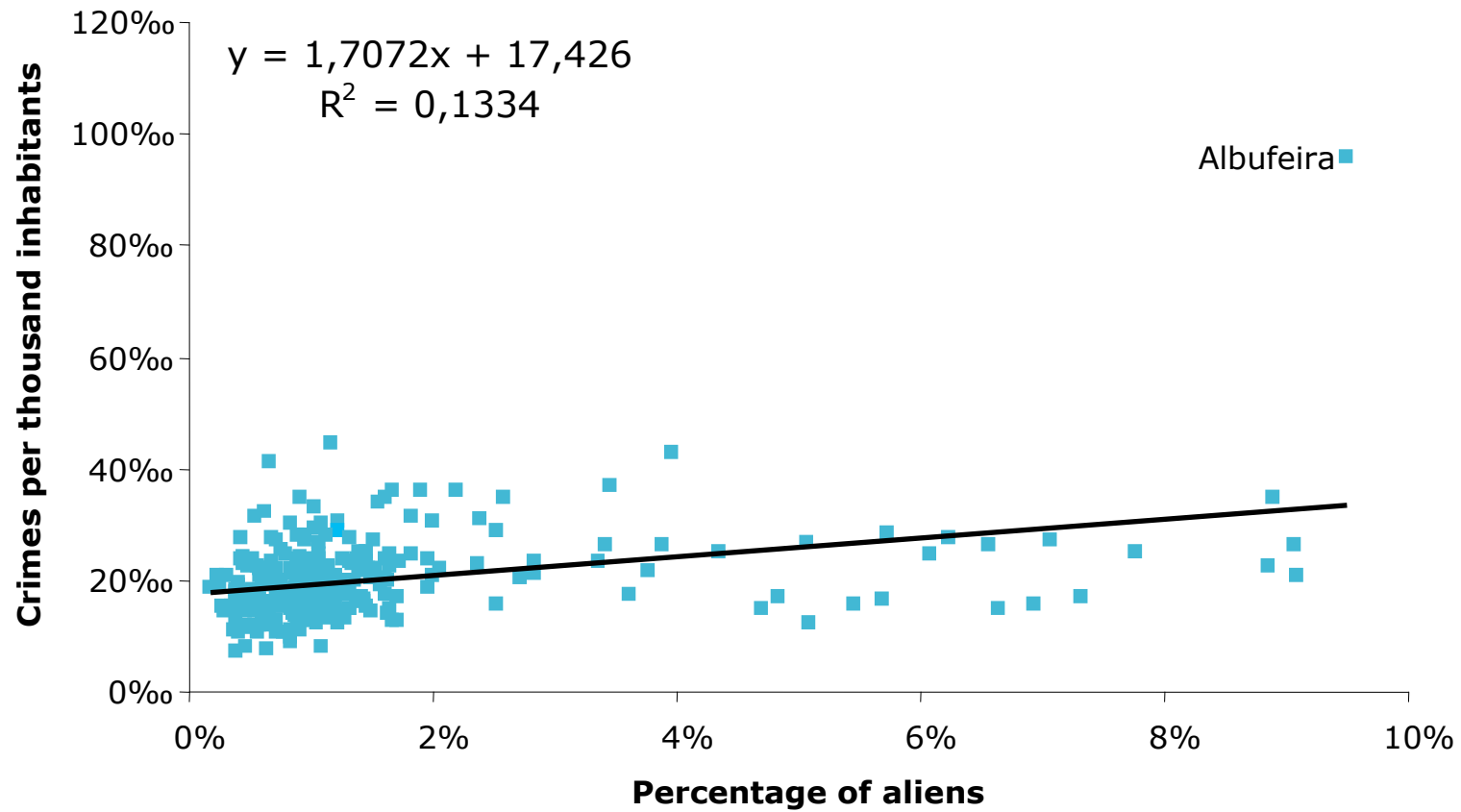
- a more masculine population;
- a younger population;
- more single people;
- were less religious;
- were more formally educated;
- were less self employed;
- worked in less qualified occupations;
- were more dependent on work to make a living;
- worked longer hours;
- daily commuted longer distances;
- lived in more cramped housing;
- were more tenants;
- paid higher rents.

Crime and aliens per municipality

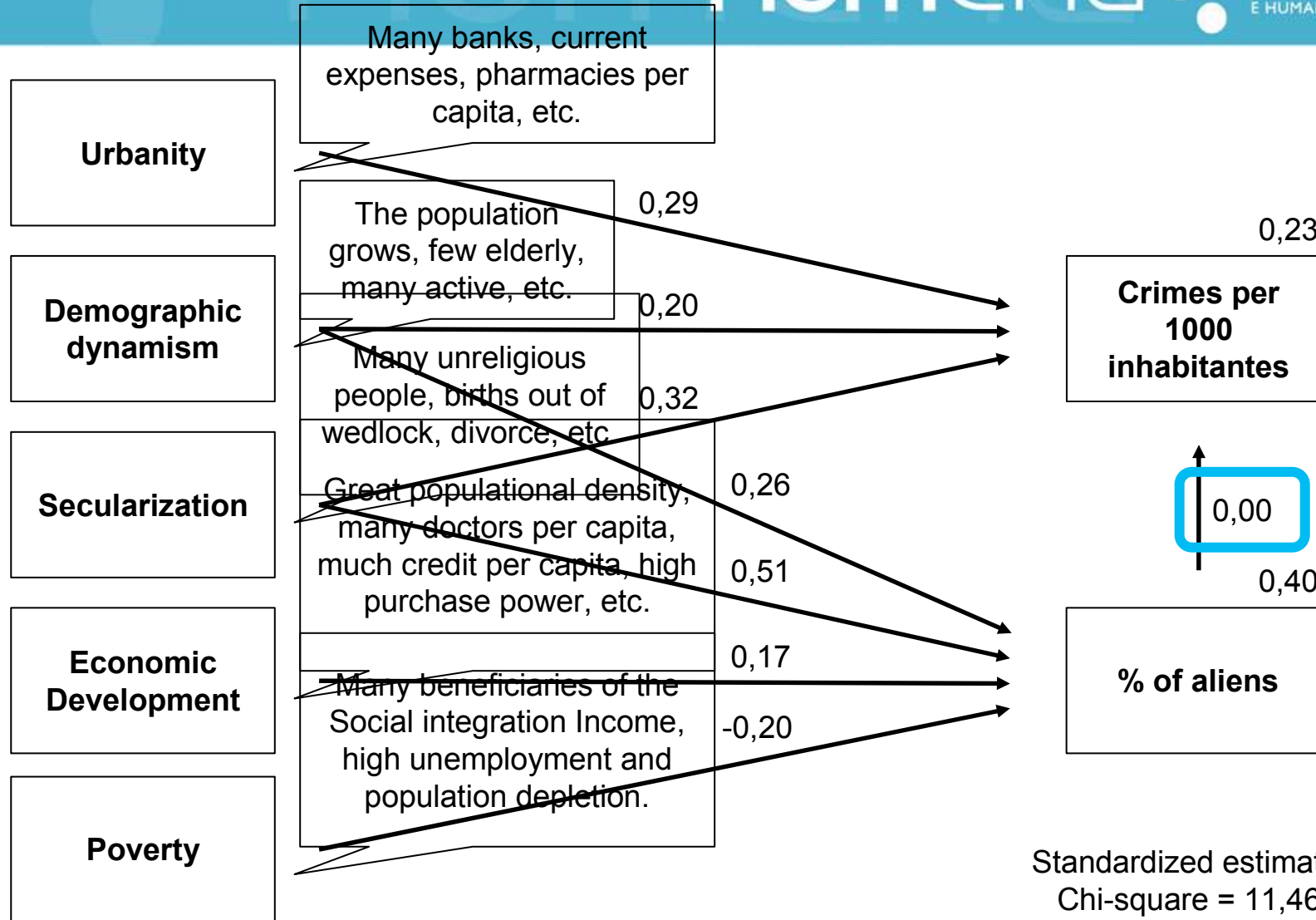
númena



CENTRO
DE INVESTIGAÇÃO
EM CIÊNCIAS SOCIAIS
E HUMANAS



No relation model



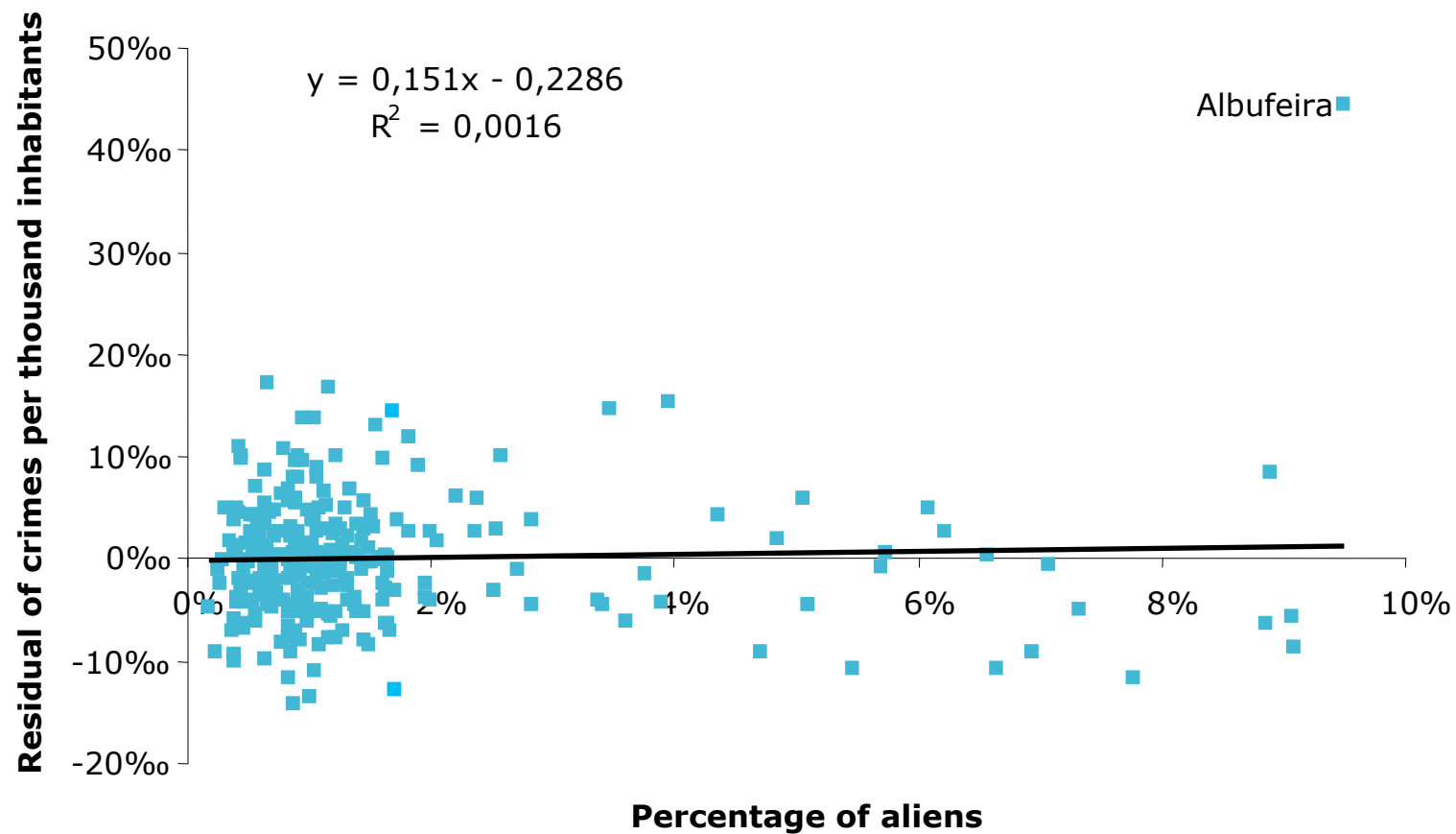
Standardized estimates:
 Chi-square = 11,464
 Degrees of freedom = 14
 P = 0,649

Crime' and aliens per municipality

númena



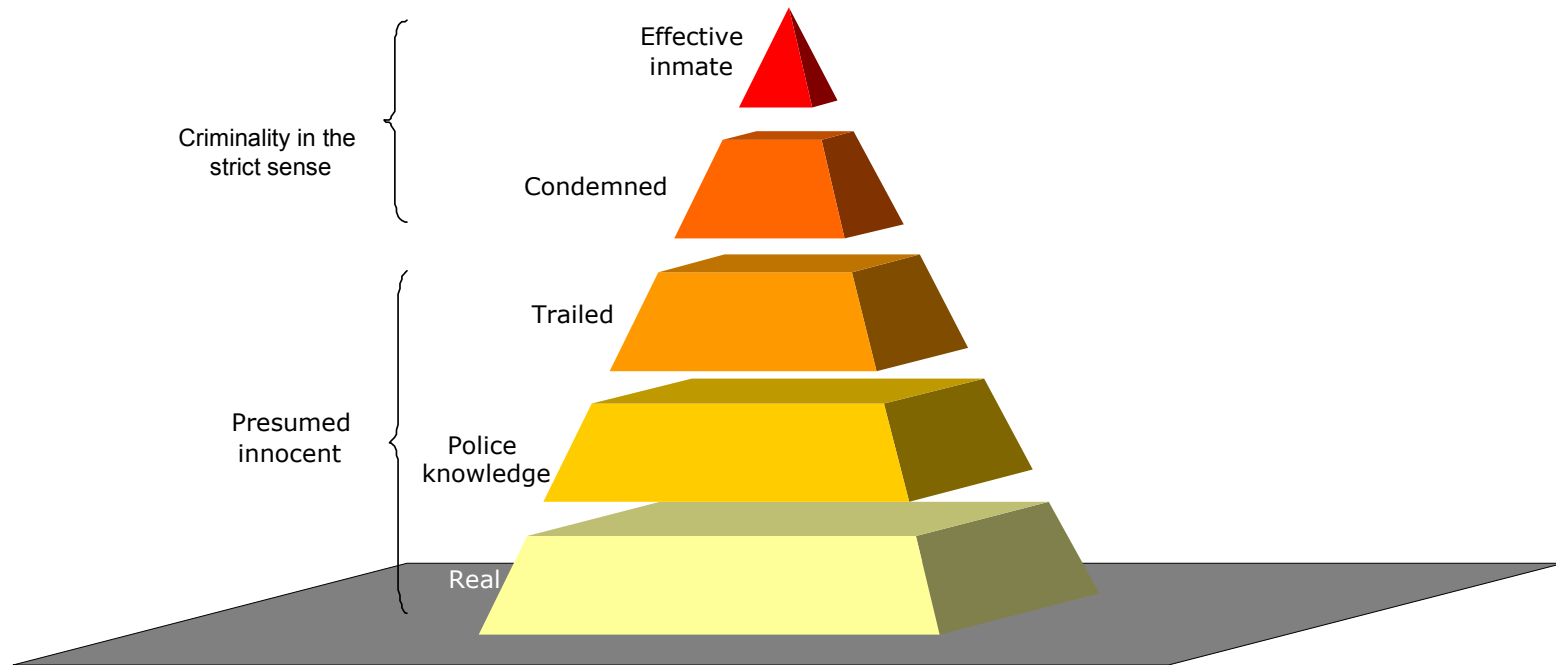
CENTRO
DE INVESTIGAÇÃO
EM CIÊNCIAS SOCIAIS
E HUMANAS



Criminality pyramid

númena

CENTRO
DE INVESTIGAÇÃO
EM CIÊNCIAS SOCIAIS
E HUMANAS



Data sources and limitations



CENTRO
DE INVESTIGAÇÃO
EM CIÊNCIAS SOCIAIS
E HUMANAS

It's still impossible for research purposes to follow a crime from its first registration at the police until the end of the judicial procedure;

This means that we are unable to study the two first floors of the criminality pyramid - real and participated criminality;

The data used in this study comes from the Legal Policy and Planning Office (www.gplp.mj.pt), responsible for the Portuguese Justice Statistics;

In this source there is no registration of the ethnic origin of each suspect - only the rudimentary dichotomy Portuguese versus aliens, therefore with no nationality description;

It's impossible to know the legal status of the registered aliens, *i.e.*, documented, undocumented or in transit;

The data source (universe) was analysed for 7 years between 1997 and 2003

Pre-trial detained suspects

númena



CENTRO
DE INVESTIGAÇÃO
EM CIÊNCIAS SOCIAIS
E HUMANAS

Article 202 of Penal
Procedure Code



Article 204 of Penal
Procedure Code



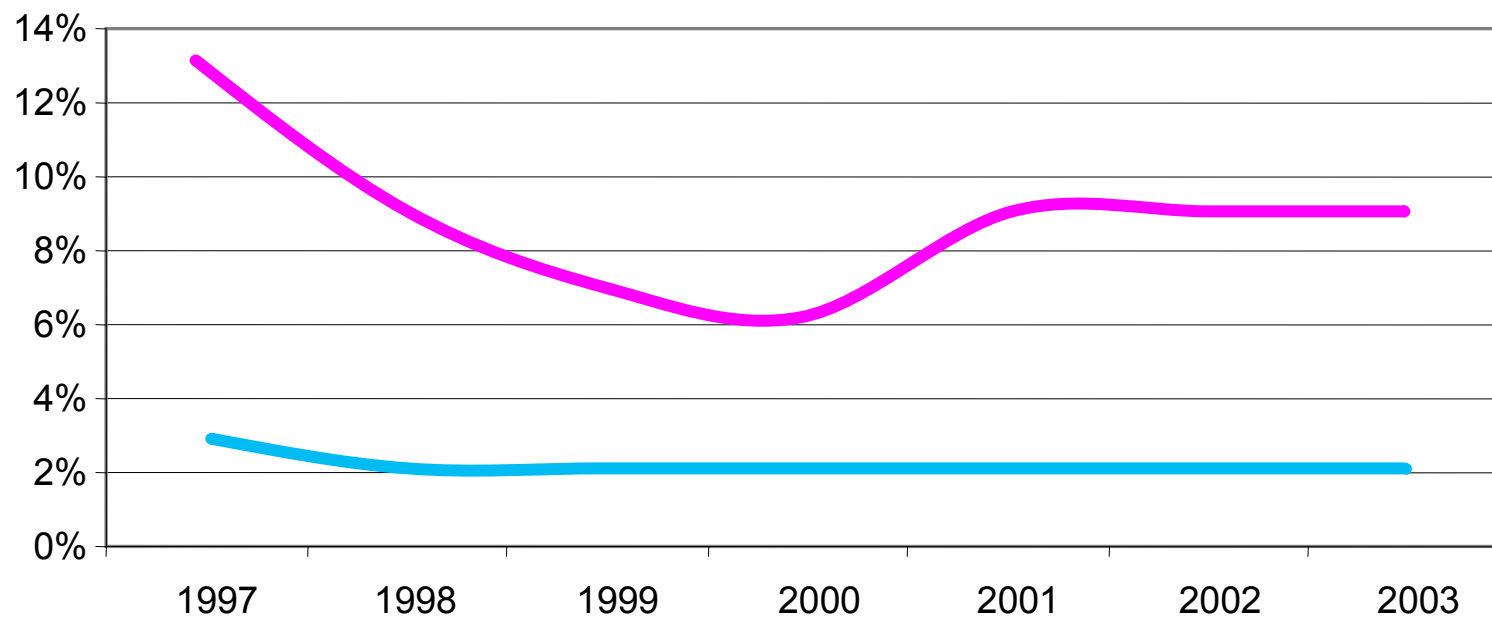
Higher rates of
pre-trial suspects
detention for Aliens

Suspects in pre-trial detention

númena



CENTRO
DE INVESTIGAÇÃO
EM CIÊNCIAS SOCIAIS
E HUMANAS



— Portuguese

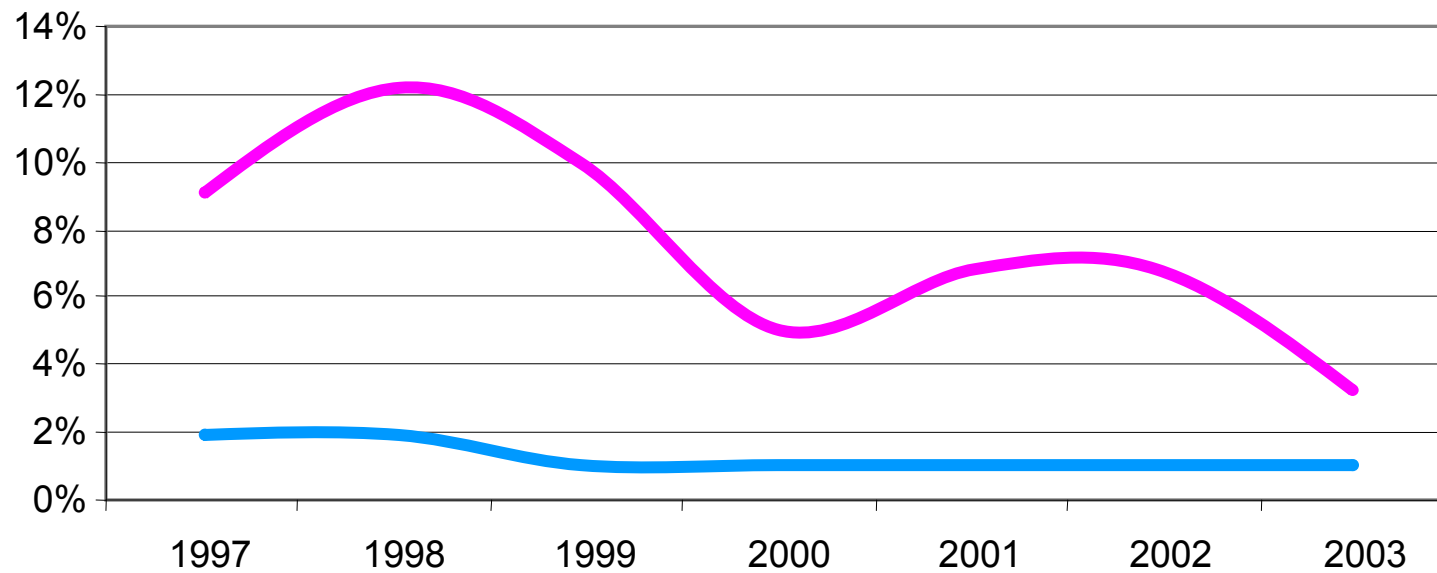
— Aliens

Acquittals after pre-trial detention

númena



CENTRO
DE INVESTIGAÇÃO
EM CIÊNCIAS SOCIAIS
E HUMANAS



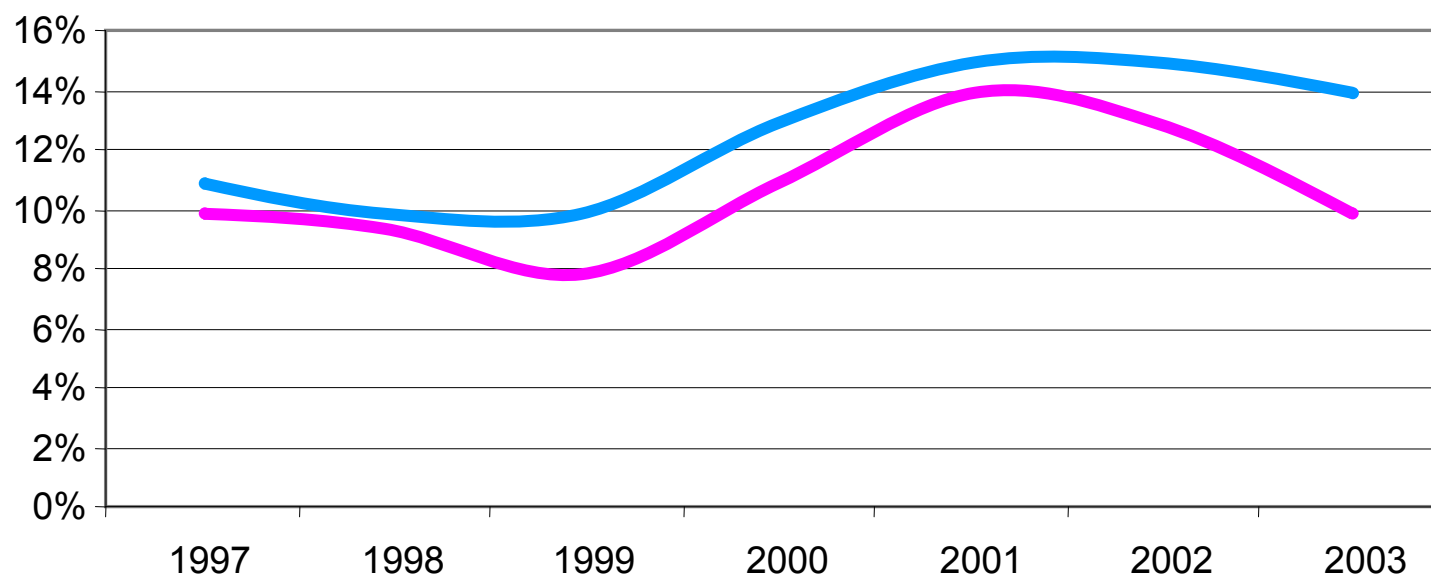
— Portuguese

— Aliens

Acquittal rates

númena

CENTRO
DE INVESTIGAÇÃO
EM CIÊNCIAS SOCIAIS
E HUMANAS



— Portuguese

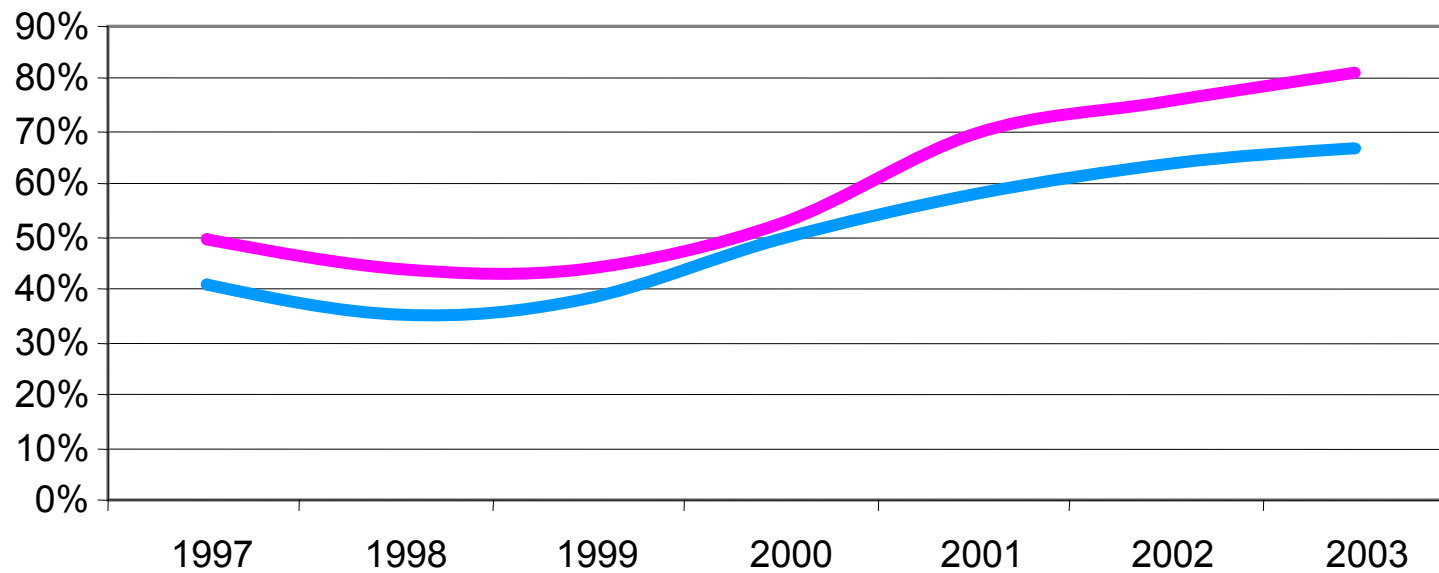
— Aliens

Condemnation rates

númena



CENTRO
DE INVESTIGAÇÃO
EM CIÊNCIAS SOCIAIS
E HUMANAS



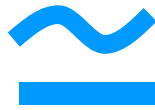
— Portuguese

— Aliens

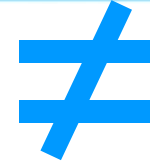
Socio-demographic Characterization

númena

CENTRO
DE INVESTIGAÇÃO
EM CIÊNCIAS SOCIAIS
E HUMANAS



more males;
more single;
more with only basic education;
more employees.



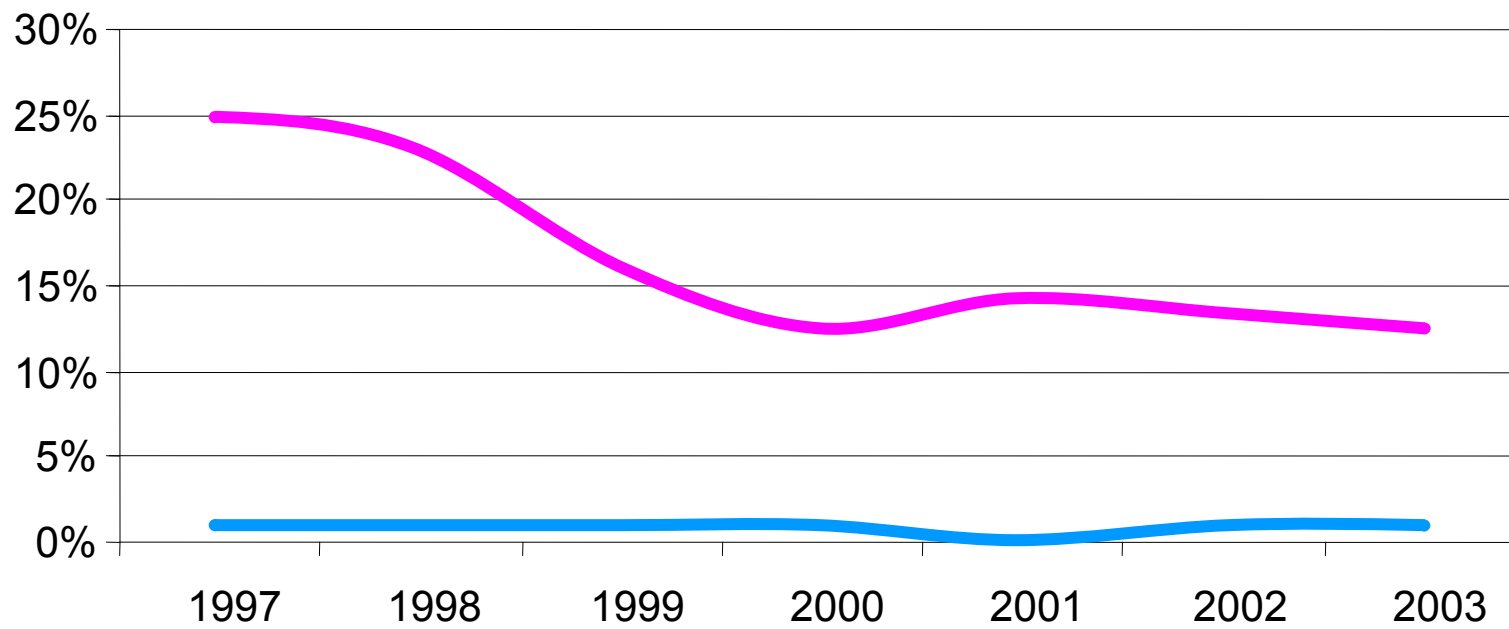
aliens are younger;
the majority of single people is
even clearer in aliens;
Aliens are more educated;
a sizeable proportion of
condemned aliens did not reside
in Portugal

Residing in a foreign country

númena



CENTRO
DE INVESTIGAÇÃO
EM CIÊNCIAS SOCIAIS
E HUMANAS



— Portuguese

— Aliens

Main crimes that are in the origin of condemnations

númena



CENTRO
DE INVESTIGAÇÃO
EM CIÊNCIAS SOCIAIS
E HUMANAS

Portuguese

Drunk driving

Driving with no legal permit

Physic integrity offenses.

Aliens

Drunk driving

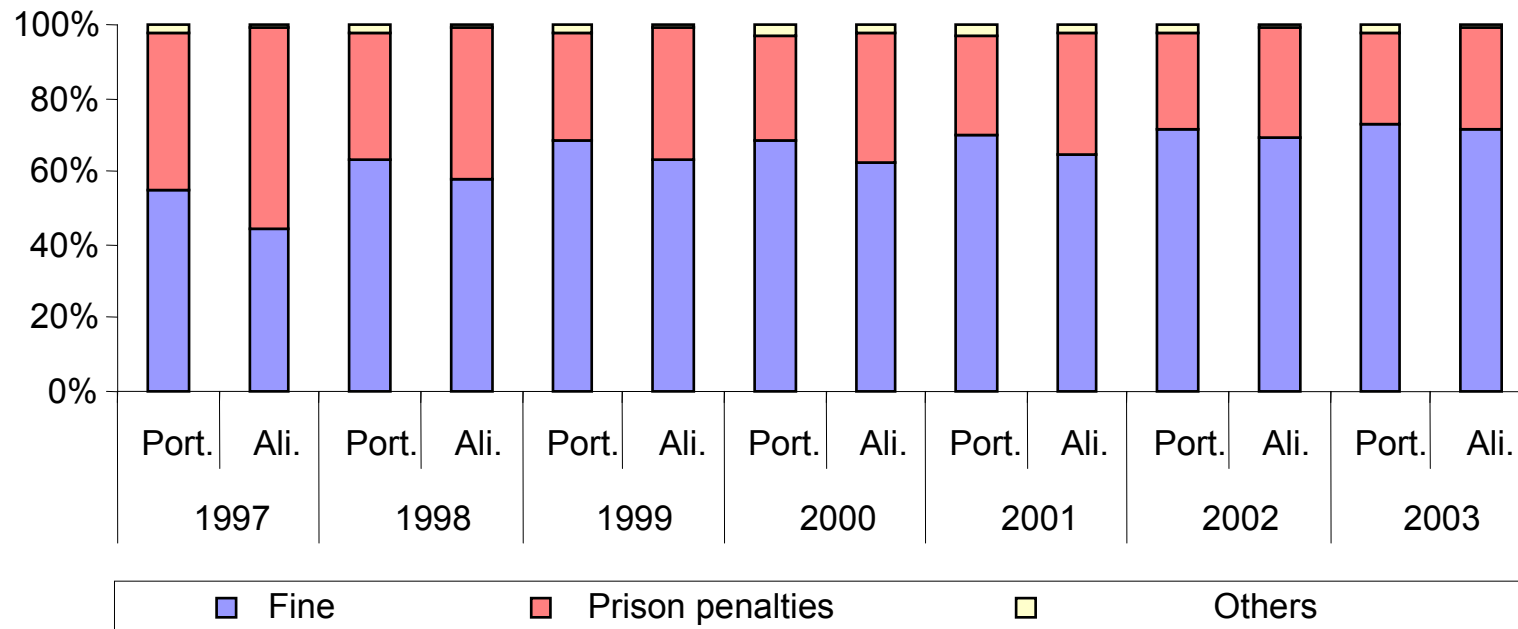
Driving with no legal permit

Drug trafficking.

Condemnation penalties

númena

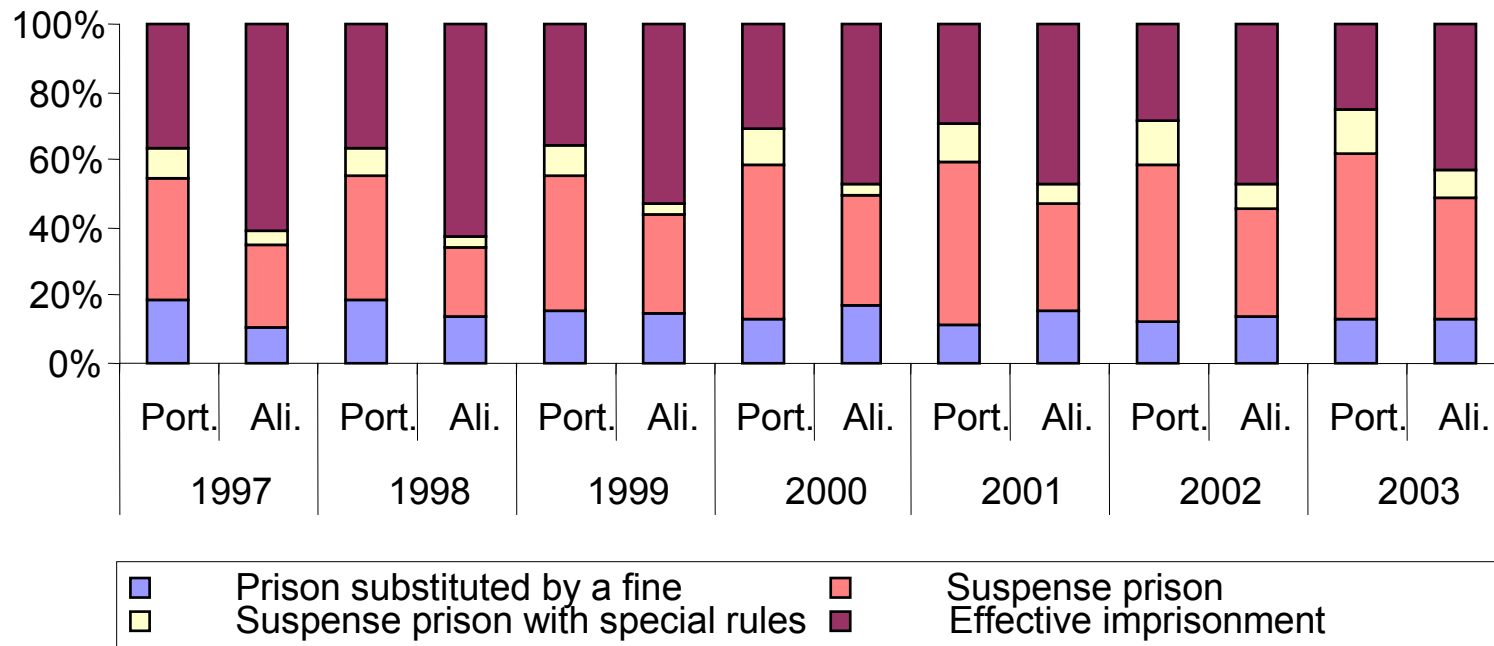
CENTRO DE INVESTIGAÇÃO EM CIÊNCIAS SOCIAIS E HUMANAS



Prison condemnations

númena

CENTRO
DE INVESTIGAÇÃO
EM CIÊNCIAS SOCIAIS
E HUMANAS

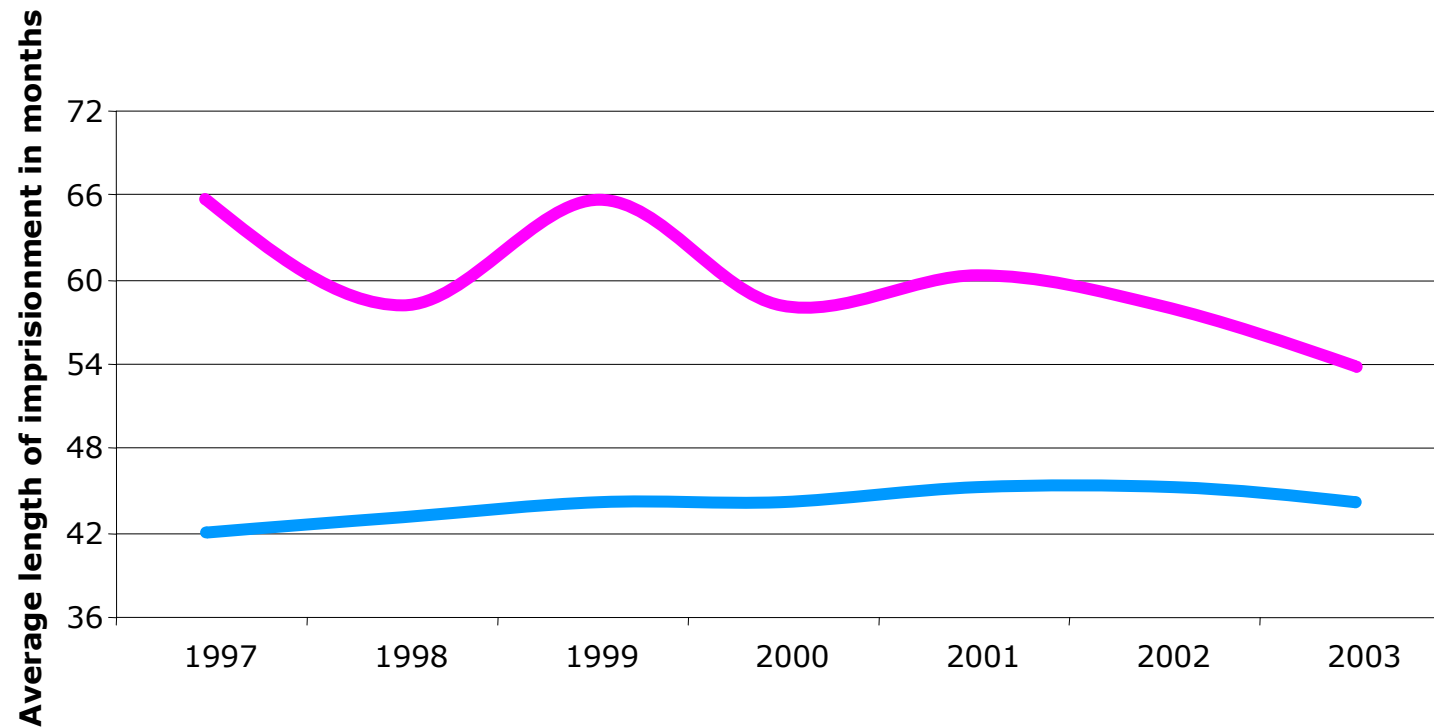


Actual length of imprisonment

númena



CENTRO
DE INVESTIGAÇÃO
EM CIÊNCIAS SOCIAIS
E HUMANAS



— Portuguese

— Aliens

Crimes that lead to actual prison sentences

númena



CENTRO
DE INVESTIGAÇÃO
EM CIÊNCIAS SOCIAIS
E HUMANAS

Portuguese

Qualified theft

Robbery

Drug trafficking

Aliens

Drug trafficking

Robbery

Qualified theft.

Major crimes that lead to effective prison condemnations

númena



CENTRO
DE INVESTIGAÇÃO
EM CIÊNCIAS SOCIAIS
E HUMANAS

Drug trafficking – punished with a minimum of 4 up to 25 prison years;

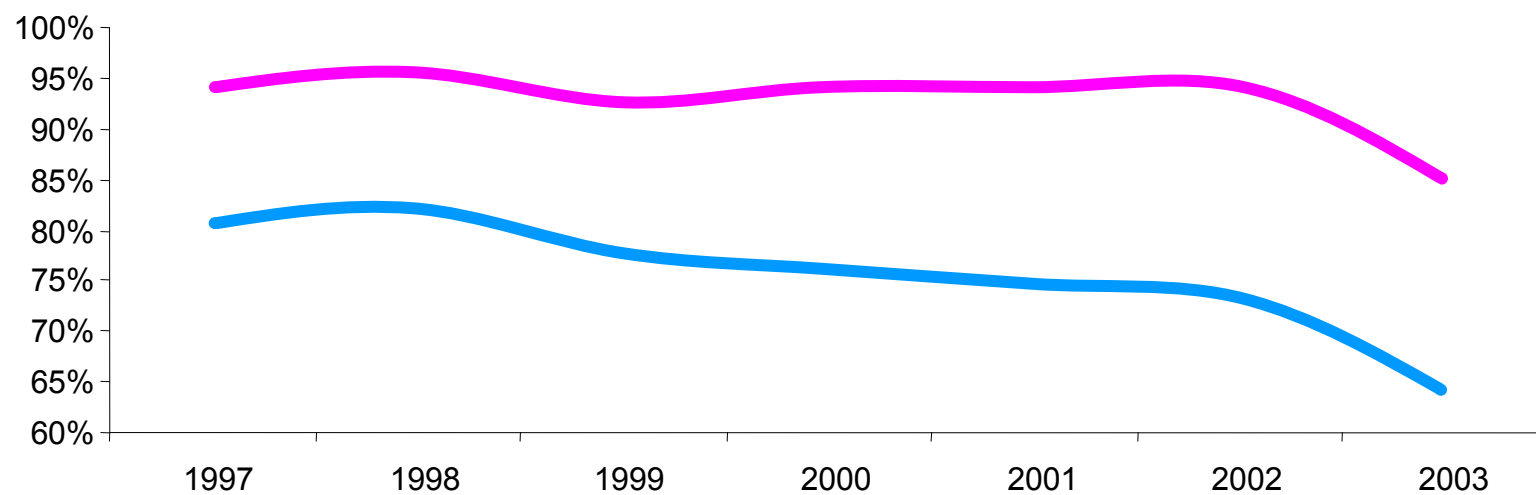
Robbery – punished with a maximum of 16 prison years;

Qualified theft – punished with a maximum of 8 prison years.

Rate of effective prison condemnation for drug trafficking

númena

CENTRO
DE INVESTIGAÇÃO
EM CIÊNCIAS SOCIAIS
E HUMANAS



— Portuguese

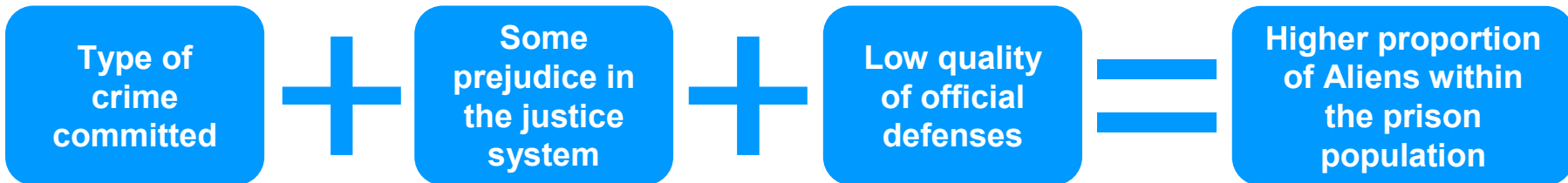
— Aliens

Reasons for the over-representation

númena



CENTRO
DE INVESTIGAÇÃO
EM CIÊNCIAS SOCIAIS
E HUMANAS

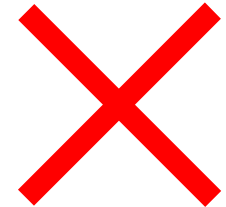


Research question

númena

CENTRO
DE INVESTIGAÇÃO
EM CIÊNCIAS SOCIAIS
E HUMANAS

Is the proved participation of aliens in criminal acts higher than what their proportion in the Portuguese society would lead us to expect?



If aliens and Portuguese were to have similar situations within the social structure, would there be differences in what relates to proved criminal involvement?

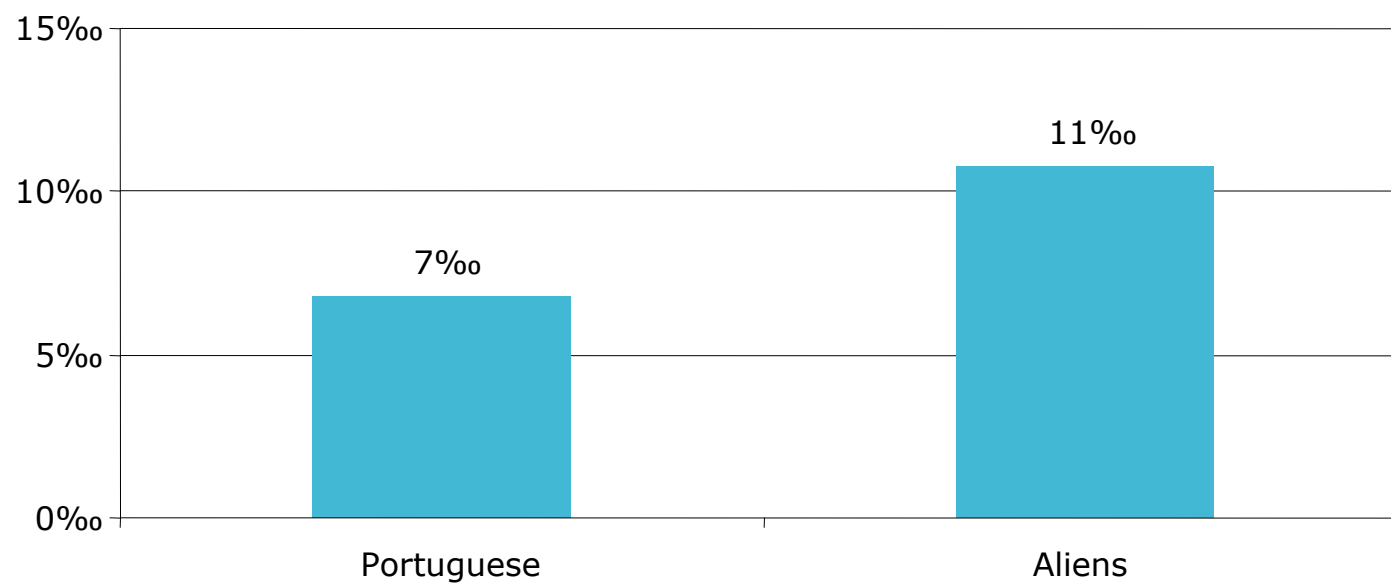


Crude criminality rates

númena



CENTRO
DE INVESTIGAÇÃO
EM CIÊNCIAS SOCIAIS
E HUMANAS



Standardizing

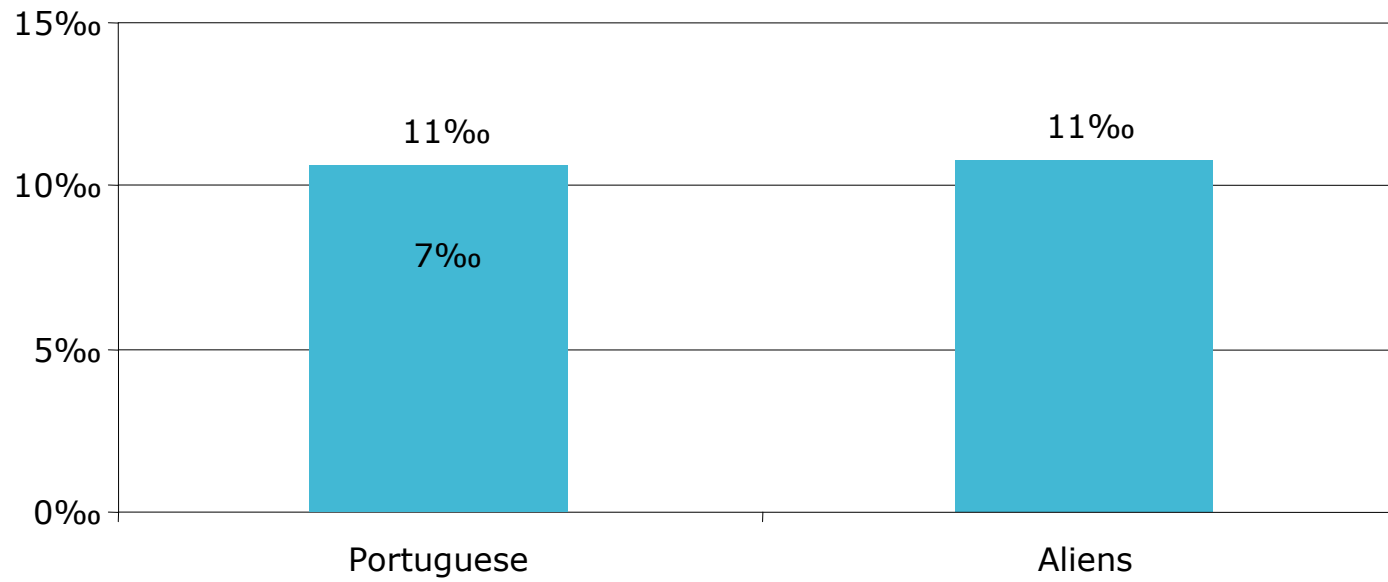
		Resident		Condemnations		Aliens structure	Port.resi . with aliens structure	Condem . / Resid.	Port. con. with aliens Structure
		Port.	Aliens	Port.	Aliens				
Male	16-21	429716	12272	10857	303	6%	524156	0,02525	13235
Female									
Total		8378888	196174	56547	2112	100%	8378888	-	85852

Standardized mortality rates

númena



CENTRO
DE INVESTIGAÇÃO
EM CIÊNCIAS SOCIAIS
E HUMANAS



The logo for Númena, featuring the word "númena" in a lowercase, sans-serif font. To the right of the text is a graphic element consisting of several white circles of varying sizes arranged in a cluster, resembling a molecular or network structure. The background is a solid blue color with rounded corners.

númena

CENTRO
DE INVESTIGAÇÃO
EM CIÊNCIAS SOCIAIS
E HUMANAS

Thank you

The Criminality of Foreigners in Portugal

11th Metropolis International Conference 2006/10/04

hugo.seabra@numena.org.pt & tiago.santos@numena.org.pt