

Metropolis 3 Oct 2006

Workshop Return

**Some remarks on current
Dutch return policy**

1. Introduction

- **Hans van Miert**
- **Secretary Advisory Committee on Aliens Affairs**
- **Jan 2004: IOM: Return Migration: Policies and Practices in Europe (commissioned by ACVZ)**
- **May 2004: Return – international aspects**
- **Jan 2005: Return – national aspects**
- **www.acvz.com**

2. Basic principles Dutch return policy

- Admission denied means returning to the country of origin**
- Illegal foreign nationals are themselves responsible for their departure, the government facilitates**
- Voluntary return is preferred and therefore promoted**
- Forced return/end of use of accommodation and provisions is the ultimate remedy**

3. Policy focus change in 2003

- **From: return is coping stone, or tail piece of alien policy**
- **To: return is issue in every stage of this policy**

4. Overview of policy measures

- **border control and surveillance of aliens**
- **identity and documentation research**
- **communication**
- **return locations**
- **stimulating voluntary return**
- **Streamlining organisational process**
- **Cooperation with countries of origin**

5. Voluntary return

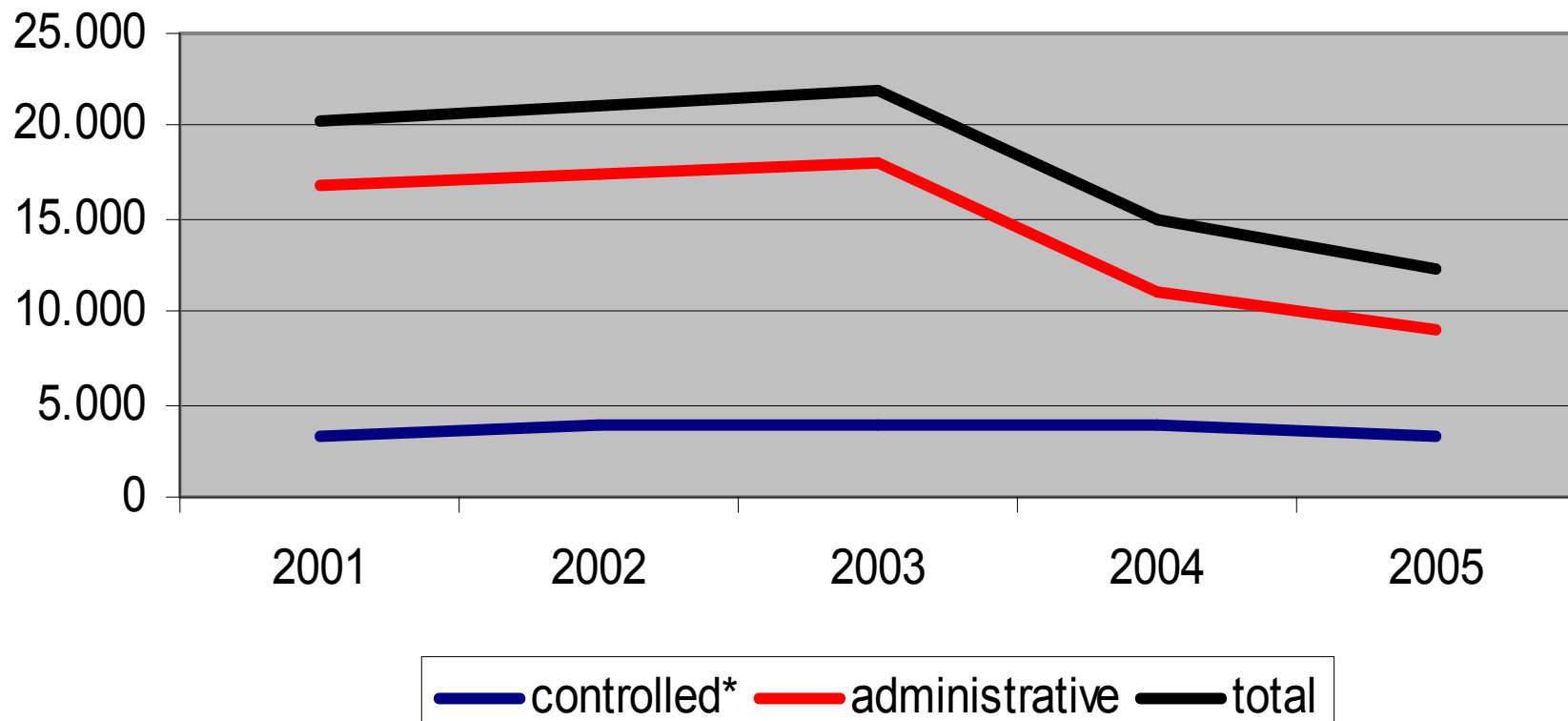
- proces
- cooperation
- presence
- facilities

6. Forced return

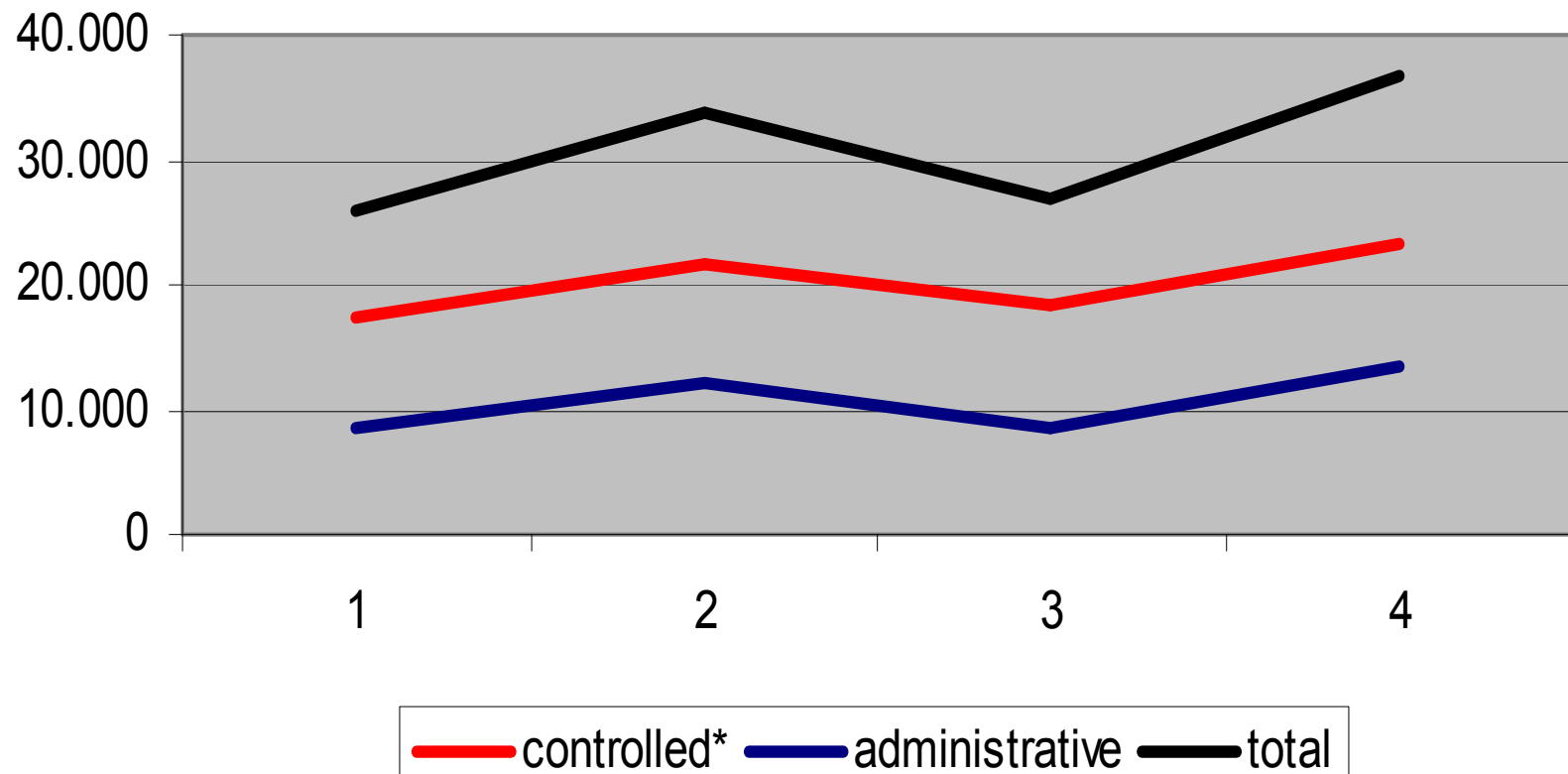
- Intensivating surveillance
- capacity for detention
- coordination by one Minister
- from 2007: one organisation



Return - asylum 2001-2005



Return - non-asylum 2002-2005



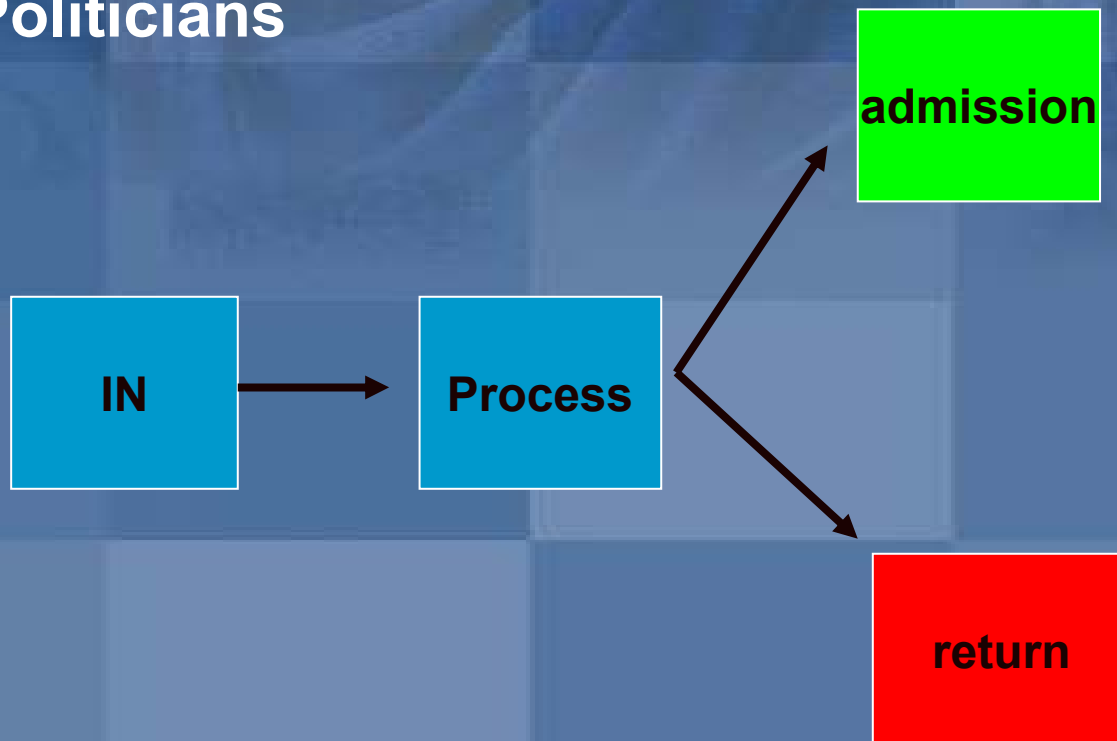
How to define result in return policy?

- **Exit system**
- **Or country?**

challenges

- countries of origin
- aliens
- informal economy

Admission policy for Politicians



Suggestions for improvement

- realistic approach
- more investment in voluntary return
- dialogue with partners
- regularization of old asylum law residents
- open discussion on informal economy



Adviescommissie voor
Vreemdelingenzaken

www.acvz.com